

Himmelstrutz 8/Infinity Guitar Amplifier

Owner's Manual (Serial. #1-)

Congratulations on your choice of **Himmelstrutz 8/Infinity (H8/I)**—your analogue alternative/complement to your valve amplifier which may sound fantastic but is big and heavy and requires maintenance and probably much electrical energy/power. **H8/I** is small, handy and powerful!

Tip: Read this document before connecting the wires to power up and play your **H8/I**, which will give you a better understanding about this little unique Swedish product.



Background: Please check the background of **H8/I** at www.himmelstrutz.com

Setup/usage:

First of all: Adjust the mighty **Vol** control to zero. The **Vol** sets the Volume/**Output Power**.

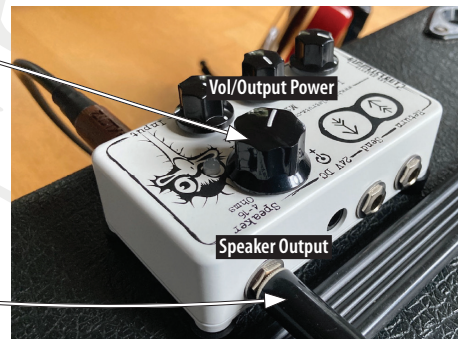
1. Speaker

Connect a speaker of 4 to 16 Ω to the **Speaker** 1/4" Jack.

Note: As there's no speaker included with this product, it's your mission to obtain one or plenty of 4 to 16 Ω speaker cabinet(s) aimed for guitar amplifiers. Please check this out with your favourite local music dealer or online.

2. Instrument In

Connect your instrument, or the output from your pedal(s) to the **Instrument Input** 1/4" Jack.



3. Power supply

A) Connect the included, dedicated **AC/DC-adapter** primary connection to a grounded mains outlet (100 to 240V AC/50 or 60 Hz) with the included **Mains Power Lead**

B) Connect the The **AC/DC adapter** secondary plug to the **H8/I 24V DC jack**

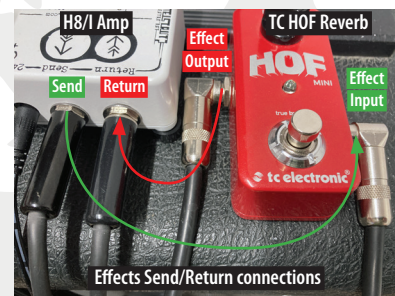


Note: Use ONLY the included, dedicated 24V AC/DC adapter for powering **H8/I**.

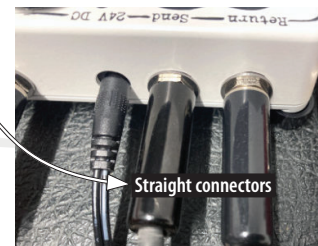
4. Effects Loop

Effects, which we all love, such as reverb, delay or modulation effects are well suited for connecting to the **H8/I** serial effects loop where the **effect input** is connected to **H8/I**

Send and the **effect output** is connected to **H8/I Return**



Tip: As the physical footprint of **H8/I** is so reduced there's a limited space for connectors so we do recommend using **straight** /not Right angled connectors, but if you fancy Right angled connectors no matter it's of course up to you to decide!



5. Mains- and Power Status LED

When the power supply is connected the power indicator (LED) of **H8/I** shines up in a **yellow** kind of hue. This indicates the amplifier is in **Standby Mode** which means the current/power consumption is minimal (10mA/0.24W). **H8/I** is in this state muted/asleep—to save power, no waste while not playing!

When you start playing **H8/I** will wake up and the LED will change to **green** which means the amp is in **Active Mode**. In this state your playing will be heard with a maximum power consumption of 15 watts—which in this context can get LOUD (be careful with your ears).

The amplifier remains in **Active Mode** for about 90 seconds after you stop playing or adjusting the instrument volume to zero. Then the **Standby Mode** is reactivated and the LED turns back to **yellow** which means back to minimal power consumption.



6. Adjusting the tone/playing your instrument

- A:** Make sure the huge and horrifying **Vol** control is still set to minimum.
- B:** Check that your instrument is connected to **Input**.
- C:** Adjust all tone controls **Lo**, **Mid**, **Hi** to middle position/noon/50%.
- D:** Slightly increase the **Vol**, play some notes and try your way until you find a suitable sound level/tone character.



Note: Despite the small format, just by turning up the volume, you can make this little amplifier roar like its classic, old, big brother which uses those energy-sucking vacuum valves!

- E:** If you need to change the tone character, in case you connected pedals in front of **H8/I**—or connected effects in the serial **Send/Return** effects loop—then adjust the **Bass**, **Mid**, **Treble** & **Vol** until you finally arrives @ a better destination.

7. Summary

At Himmelstrutz Elektro Art we wish you will get good use of and find a lot of inspiring sounds and feel in company with your evil little **H8/I**!

Take care of your hearing: If you play loud, use ear protection—it's easy to forget when you're caught up in irresistible sounds. But don't ignore it: loud noise can seriously damage your ears. There's nothing cool about making yourself deaf (and maybe even a bit dumb) by not thinking ahead.

For questions or comments, don't hesitate to contact [Himmelstrutz Elektro Art](http://www.himmelstrutz.com).

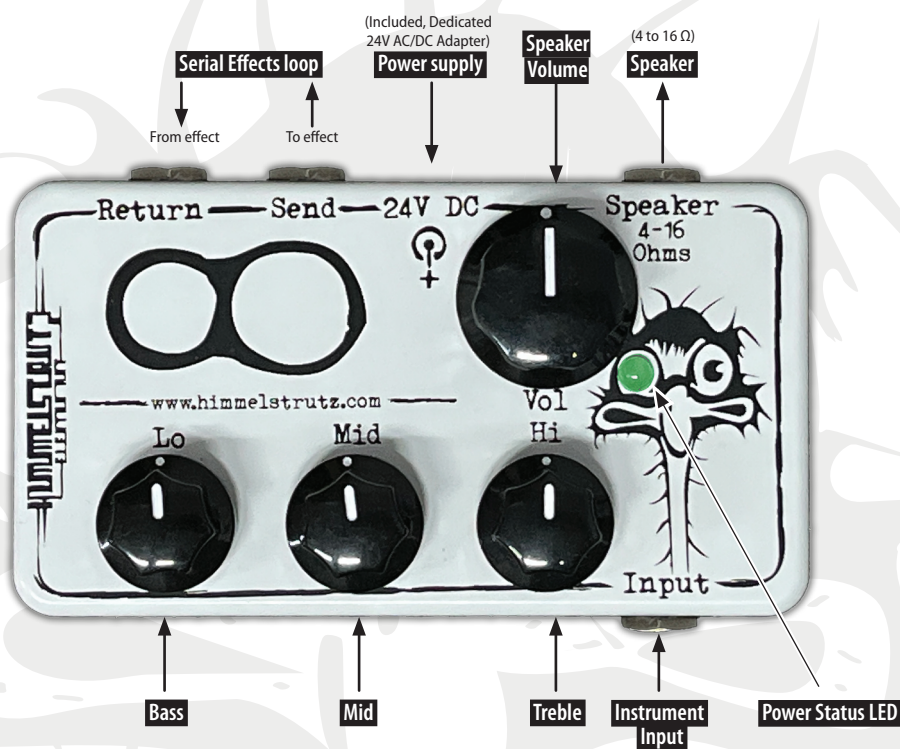
Sincerely,

A blue ink handwritten signature, likely belonging to Joakim Hedeby.

Joakim Hedeby,
Himmelstrutz Elektro Art, Sweden



Himmelstrutz 8/Infinity Connections/Controls



Technical Specification

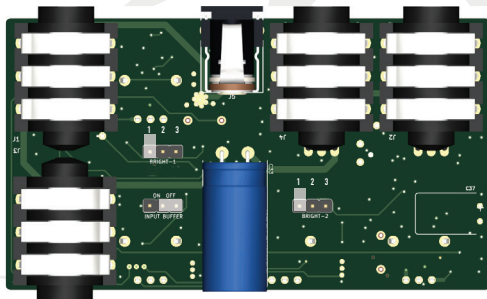
Model	Model Family	Technology	Channels
Himmelstrutz 8/Infinity	Himmelstrutz 8/Infinity	100% Solid state/sounding like valve (No digital/No OP-Amps)	1
Output power	Outputs	Inputs	Controls
4 Ω approx 15 watt * 8 Ω approx 8 watt * 16 Ω approx 4 watt * * @ about 10 % distortion, which for electric guitars usually is a good thing.	1 x Speaker (4 to 16 Ω) via 1 x 1/4" Jack Socket 1 x Series Effects Loop Send via 1 x 1/4" Jack Socket (1k Ω output impedance)	1 x Input via 1 x 1/4" Jack Socket (1 M Ω input impedance) 1 x Series Effects Loop Return via 1 x 1/4" Jack Socket (1M Ω input impedance)	Bass, Mid, Treble, Vol (via 4 potentiometers)
Dimensions (Controls & feet included)			
Weight (kg/lbs)	Width (mm/inch)	Height (mm/inch)	Depth (mm/inch)
0,7 kg/1,54 lbs	111,6/4,39	60,0/2,36	61,6/2,42

Himmelstrutz 8/Infinity Internal Controls/Settings

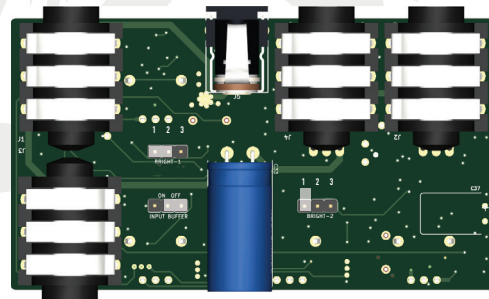
Note: Adjust the internal settings (3 switches/jumpers) only if you're sure what you're doing. If not, feel free to contact [Himmelstrutz Elektro Art.](#) for assistance. Move the switches/jumpers (white rectangles shown below) carefully with your fingers or a small flat pliers. By moving the switches/jumpers between 1-2 or 2-3 quite a few combinations can be made for different characters/treble modes. The "Input buffer" switch/jumper has 2 modes: ON or OFF. Most (probably all) modes are shown below.

Important: Changing the jumpers will make subtle adjustments to the tone or character, you won't radically transform the H8/I—the proud H8/I core character will remain.

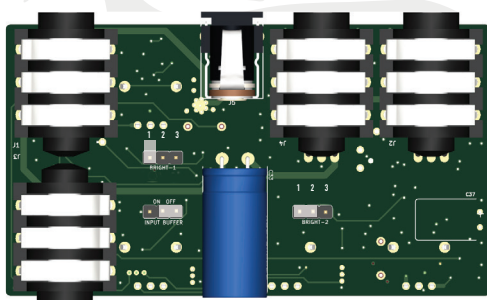
1—"Softest Mode" (2 Bright switches off/Input buffer OFF)



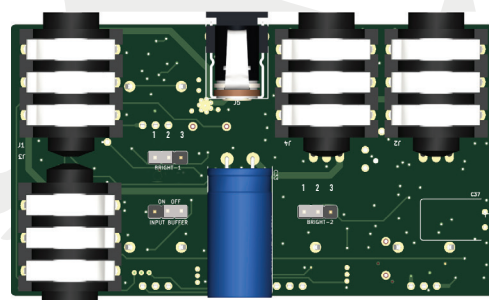
2—"Bright mode-1" (Bright-1 ON/Bright-2 OFF)



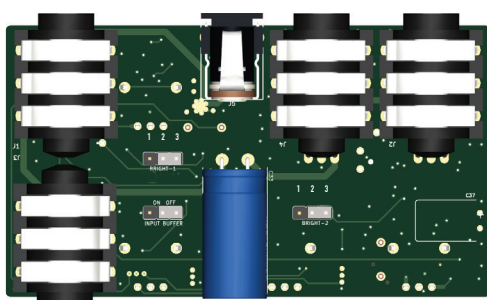
3—"Bright mode-2" (Bright-2 ON/Bright-1 OFF)



4—"Bright mode-3" (Bright-1 & Bright-2 ON)



5—"Bright mode-4" (Bright-1 & Bright-2 ON)



6—"Bright mode-5" (Bright-1 & Bright-2 + Input Buffer ON)

